

SEPTEMBER 6 - 9



EAGLE FAIR

EXHIBIT CATEGORIES



Eagle Park Fairgrounds, 14331 Grange Rd., Eagle, MI 517-627-8230



EAGLE FAIR BOARD OFFICERS AND TRUSTEES

PRESIDENT:	Larry Lischkge	819-1173
VICE PRESIDENT:	Jeff Rademacher	490-1787
SECRETARY:	Laurie Kemp	517-294-0980
TREASURER:	Don Volk	626-6236
TRUSTEES:	Cindy Finkbiner	517-202-5888
	Kelli Stiffler	517-331-1959
	Kristie Feldpausch	517-614-3924
	Pam Pitchford	281-6238
	Ray Pitchford	626-2542
	Tim Fish	627-1227
	John Hallenbeck	582-0489
	Justin Kebler	
	Jeff Oberg	517-712-1302
HONORARY MEMBERS:	Greg Brooks and Al Durham	

EAGLE PARKS AND RECREATION BOARD OFFICERS AND TRUSTEES

PRESIDENT:	Bill Kemp	517-881-3372
VICE PRESIDENT:	Dave Crippen	627-9135
SECRETARY:	Lindsey McClellan	213-3637
TREASURER:	Marc Finkbiner	719-9980
TRUSTEES:	Amy Finkbiner	843-214-4121
	Jim Dean	627-3805
	Nick Maceroni	517-204-1101
	Matt Sedore	517-712-2875
	Mike Durham	213-3637
	Eric Rademacher	626-6583
	Missy Leonard	517-202-7493
	Terry Dewey	281-9836
	Kurt Christmas	802-8470
HONORARY TRUSTEES:	Charlie Foster, Curtis Flynn and Steve Durham	

COMMITTEES FOR EAGLE DAYS

FOOD:	Mike Durham	213-3637
ADVERTISING:	Dave Crippen	627-9135
BALL GAMES:	Bruce Nurenburg	517-896-0891
CARNIVAL/RIDES:	Bill Kemp	881-3372
EXHIBITS:	Mary Rademacher	626-6519
PARADE:	Tim Fish	526-0396
BEER TENT:	Don Volk/Jan Volk/Missy Leonard	626-6236
MAINTENANCE:	Jim Dean	626-3805
ENTERTAINMENT:	Don Volk	626-6236
MERCHANTS BOOTHS & FLYERS:	Bill Kemp	881-3372
MUD BOG:	Jeremy King	734-231-7840
DEMO-SCRAMBLE:	Jeff Rademacher	490-1787
OLD TIMERS BALL GAME:	Gary Davidson	626-2382
CHICKEN BBQ:	Todd & Heidi Wagner and Terry Dewey	
OX ROAST:	Larry Lischkge	622-5968
CAMPING:	Bill Kemp	517-881-3372



Eagle Days Fair Exhibits

General Rules, Regulations, and Guidelines for Exhibits

1. No exhibit may be entered in more than one class or entitled to more than one premium. One entry per person. Such as:
 - a. One dress
 - b. One blanket or pillow
 - c. One pair of slacks, etc.
2. No article may be entered in any name but that of the owner. Only articles that are listed will be accepted for competition.
3. **All exhibits must be entered from 3:00 p.m. - 8:00 p.m. on Friday, Sept. 7, 2018 at the NEW LOCATION in the Reception Hall.**
4. After arrival at the fairgrounds, all entries are under the supervision and control of The Fair Board. All reasonable care will be taken to provide against loss or injury to exhibits, but The Fair Board will NOT be responsible for loss or injury to exhibits.
5. **No exhibits are to be removed before 3:00 p.m. on Sunday, Sept. 9, 2018. Exhibits should be picked up no later than 5:00 p.m.**
6. The Fair Board reserves the right to make any decisions not covered by the official rules and regulations as published.
7. Premiums will be ribbons and money.
8. All exhibitors must be residents of Eagle Township or bordering townships or a member of an organization within the township.
9. All exhibits are to be made, grown, etc. within the last year.
10. No professionals may enter.
11. Each exhibit will be judged on its own merit.



NOTICE: To help eliminate confusion, only things listed in this book will be accepted and judged. All other items not listed can be left for display only.

PLEASE NOTE: Only 2 jars of canned goods are needed for each entry.

All canned items must be in CLEAR JARS

Division I - SEWING

Section A - Under 12

- Class 1 - Dress
- Class 2 - Blanket or pillow
- Class 3 - Slacks
- Class 4 - Blouse
- Class 5 - Any other article not listed above

Section B - 12 to 14 years

- Class 6 - Dress
- Class 7 - Blanket or pillow
- Class 8 - Slacks
- Class 9 - Blouse
- Class 10 - Any other article not listed above

Section C - 15 to 18 years

- Class 11 - Dress
- Class 12 - Blanket or pillow
- Class 13 - Slacks
- Class 14 - Blouse
- Class 15 - Any other article not listed above

Section D - Open

- Class 16 - Dress
- Class 17 - Blanket or pillow
- Class 18 - Slacks
- Class 19 - Blouse
- Class 20 - Any other article not listed above

Division II - KNITTING

Section A - Under 12

- Class 21 - Any article

Section B - 12 to 14 years

- Class 22 - Sweater
- Class 23 - Afghan
- Class 24 - Baby Afghan
- Class 25 - Any article not listed

Section C - 15 to 18 years

- Class 26 - Sweater
- Class 27 - Afghan
- Class 28 - Baby Afghan
- Class 29 - Any article not listed

Section D - Open

- Class 30 - Sweater
- Class 31 - Afghan
- Class 32 - Baby Afghan
- Class 33 - Any other article not listed above

Division III - CROCHETING

Section A - Under 12

- Class 34 - Any article

Section B - 12 to 14 years

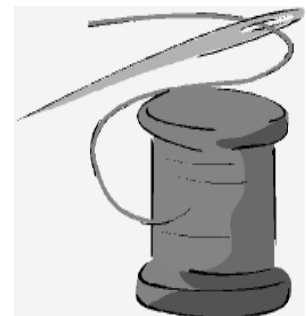
- Class 35 - Sweater
- Class 36 - Afghan
- Class 37 - Baby afghan
- Class 38 - Any other article not listed above

Section C - 15 to 18 years

- Class 39 - Sweater
- Class 40 - Afghan
- Class 41 - Baby afghan
- Class 42 - Any other article not listed above

Section D - Open

- Class 43 - Sweater
- Class 44 - Afghan
- Class 45 - Baby afghan
- Class 46 - Any other article not listed above



Division IV - NEEDLEWORK

Exhibits in this division are those made with needle and thread (yarn, embroidery floss, etc.) on fabric. Each exhibitor will be allowed to bring 2 different items in each class (classes 47 - 86). For example: an exhibitor may bring a counted cross stitch pillow AND wall-hanging OR an article of clothing and pillow, etc.

Section A - Under 12

- Class 47 - Embroidery (hand)
- Class 4700 - Embroidery (machine)
- Class 48 - Crewel & bargello
- Class 49 - Counted cross stitch
- Class 50 - Candlewicking
- Class 51 - Chicken scratch
- Class 52 - Needlepunch

Section B - 12 to 14 years

- Class 53 - Embroidery (hand)
- Class 5300 - Embroidery (machine)
- Class 54 - Crewel & bargello
- Class 55 - Counted cross stitch
- Class 56 - Candlewicking
- Class 57 - Chicken scratch
- Class 58 - Needlepunch

Section C - 15 to 18 years

- Class 59 - Embroidery (hand)
- Class 5900 - Embroidery (machine)
- Class 60 - Crewel & bargello
- Class 61 - Counted cross stitch
- Class 62 - Candlewicking
- Class 63 - Chicken scratch
- Class 64 - Needlepunch

Section D - Open

- Class 65 - Embroidery (hand)
- Class 6500 - Embroidery (machine)
- Class 66 - Crewel & bargello
- Class 67 - Counted cross stitch
- Class 68 - Candlewicking
- Class 69 - Chicken scratch
- Class 70 - Needlepunch

Division V - NEEDLECRAFTS

Section A - Under 12

- Class 71 - Latch hook
- Class 72 - Needlepoint
- Class 73 - Plastic canvas
- Class 74 - Lace net darning

Section B - 12 to 14 years

- Class 75 - Latch hook
- Class 76 - Needlepoint
- Class 77 - Plastic canvas
- Class 78 - Lace net darning

Section C - 15 to 18 years

- Class 79 - Latch hook
- Class 80 - Needlepoint
- Class 81 - Plastic canvas
- Class 82 - Lace net darning

Section D - Open

- Class 83 - Latch hook
- Class 84 - Needlepoint
- Class 85 - Plastic canvas
- Class 86 - Lace net darning

Division VI - WEAVING

Section A - Under 12

Section B - 12 to 14 years

Section C - 15 to 18 years

Section D - Open

Class 87 - Exhibit article made

Class 88 - Exhibit article made

Class 89 - Exhibit article made

Class 90 - Exhibit article made

Division VII - BASKET WEAVING

Section A - Under 12

Section B - 12 to 14 years

Section C - 15 to 18 years

Section D - Open

Class 91 - Exhibit article made

Class 92 - Exhibit article made

Class 93 - Exhibit article made

Class 94 - Exhibit article made

Division VIII - QUILTS

Items in this section must be quilted by hand. Each exhibitor will be allowed to bring 3 different items in each class (classes 95 - 98).

Section A - Under 12	Class 95 - Exhibit article made
Section B - 12 to 14 years	Class 96 - Exhibit article made
Section C - 15 to 18 years	Class 97 - Exhibit article made
Section D - Open	Class 98 - Exhibit article made

Division IX - QUILTS

Items in this section must be quilted by machine. Each exhibitor will be allowed to bring 3 different items in each class (classes 99 - 102).

Section A - Under 12	Class 99 - Exhibit article made
Section B - 12 to 14 years	Class 100 - Exhibit article made
Section C - 15 to 18 years	Class 101 - Exhibit article made
Section D - Open	Class 102 - Exhibit article made

Division X - MACRAME

Section A - Under 12	Class 103 - Exhibit article made
Section B - 12 to 14 years	Class 104 - Exhibit article made
Section C - 15 to 18 years	Class 105 - Exhibit article made
Section D - Open	Class 106 - Exhibit article made

Division XI - TATTING

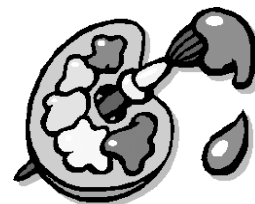
Section A - Under 12	Class 107 - Exhibit article made
Section B - 12 to 14 years	Class 108 - Exhibit article made
Section C - 15 to 18 years	Class 109 - Exhibit article made
Section D - Open	Class 110 - Exhibit article made

Division XII - CERAMICS

Section A - Under 12	Class 111 - Exhibit article made
Section B - 12 to 14 years	Class 112 - Exhibit article made
Section C - 15 to 18 years	Class 113 - Exhibit article made
Section D - Open	Class 114 - Exhibit article made

Division XIII - ARTWORK

Section A - Under 12	Class 115 - Exhibit article made
Section B - 12 to 14 years	Class 116 - Exhibit article made
Section C - 15 to 18 years	Class 117 - Exhibit article made
Section D - Open	Class 118 - Exhibit article made



Division XIV - PHOTOGRAPHY

Each class has 4 categories: people, pets and animals, outdoor life and other subjects. Limit two for each and know what category before checking in. ***NOTE: Pictures need to be framed or in plastic protectors.**

Section A - Under 12	Class 119 - Exhibit article made
Section B - 12 to 14 years	Class 120 - Exhibit article made
Section C - 15 to 18 years	Class 121 - Exhibit article made
Section D - Open	Class 122 - Exhibit article made

Division XV - STAINED GLASS

Section A - Under 12	Class 123 - Exhibit article made
Section B - 12 to 14 years	Class 124 - Exhibit article made
Section C - 15 to 18 years	Class 125 - Exhibit article made
Section D - Open	Class 126 - Exhibit article made

Division XVI - REPURPOSED ITEMS

Section A - Under 12	Class 127 - Exhibit article made
Section B - 12 to 14 years	Class 128 - Exhibit article made
Section C - 15 to 18 years	Class 129 - Exhibit article made
Section D - Open	Class 130 - Exhibit article made

Division XVI-O - OTHER CRAFTS - NOT PREVIOUSLY MENTIONED

Each exhibitor will be allowed to bring 3 different items in each class (classes 1270 - 1300). These crafts must be articles that are not mentioned above.

Section A - Under 12	Class 1270 - Exhibit article made
Section B - 12 to 14 years	Class 1280 - Exhibit article made
Section C - 15 to 18 years	Class 1290 - Exhibit article made
Section D - Open	Class 1300 - Exhibit article made

Division XVII - ENTOMOLOGY

Section A - Under 12	Class 131 - Individual exhibit of insects
Section B - 12 to 14 years	Class 132 - Individual exhibit of insects
Section C - 15 to 18 years	Class 133 - Individual exhibit of insects
Section D - Open	Class 134 - Individual exhibit of insects



Division XVIII - WOODCRAFT

Each exhibitor will be allowed to bring 3 different items in each class (classes 135 - 138).

Section A - Under 12	Class 135 - Exhibit article made
Section B - 12 to 14 years	Class 136 - Exhibit article made
Section C - 15 to 18 years	Class 137 - Exhibit article made
Section D - Open	Class 138 - Exhibit article made

Division XIX - WOODFINISHING

Each exhibitor will be allowed to bring 3 different items in each class (classes 139 - 142).

Section A - Under 12	Class 139 - Exhibit article made
Section B - 12 to 14 years	Class 140 - Exhibit article made
Section C - 15 to 18 years	Class 141 - Exhibit article made
Section D - Open	Class 142 - Exhibit article made

Division XX - LEATHERCRAFTS

Each exhibitor will be allowed to bring 3 different items in each class (classes 143 - 146).

Section A - Under 12	Class 143 - Exhibit article made
Section B - 12 to 14 years	Class 144 - Exhibit article made
Section C - 15 to 18 years	Class 145 - Exhibit article made
Section D - Open	Class 146 - Exhibit article made



Division XXI - BAKED GOODS - OPEN

(No ready mixes of any kind can be used) Each exhibitor will be allowed to bring only one item in each class.

Class 147 - White loaf of bread	Class 155 - Dark cake
Class 148 - Dark loaf of bread	Class 156 - One crust pie
Class 149 - White rolls	Class 157 - Two crust pie
Class 150 - Dark rolls	Class 158 - Sweet rolls
Class 151 - Six light cookies	Class 159 - Banana bread
Class 152 - Six dark cookies	Class 160 - Zucchini bread
Class 153 - Six fruit cookies	Class 161 - Pumpkin bread
Class 154 - Light cake	Class 162 - Other

Division XXII - DEHYDRATED FRUITS & VEGETABLES - OPEN

Each exhibitor will be allowed to bring 2 different items in each class One 4 oz (or larger) jar of each item.

Class 163

Division XXIII - CANDIES - OPEN

Class 164 - Small plate of light fudge
Class 165 - Small plate of dark fudge
Class 166 - Other

Division XXIV - CAKE DECORATING

Section A - Under 12	Class 167 - Decorated cake or form
Section B - 12 to 14 years	Class 168 - Decorated cake or form
Section C - 15 to 18 years	Class 169 - Decorated cake or form
Section D - Open	Class 170 - Decorated cake or form

Division XXV - COOKIE DECORATING - FOR KIDS UNDER 12 ONLY

Class 171 - Decorated cookies

Division XXVI - CANNED VEGETABLES - OPEN

All Cans, Rings & Lids **MUST MATCH** by Brand. (Ex: Mason, Ball or Kerr)

An exhibit of 2	Class 172 - Tomatoes	Class 175 - Carrots
quarts or pints of:	Class 173 - Corn	Class 176 - Tomato Juice
	Class 174 - Beans	Class 177 - Other



Division XXVII - CANNED FRUITS - OPEN

An exhibit of 2	Class 178 - Applesauce	Class 181 - Berries
quarts or pints of:	Class 179 - Peaches	Class 182 - Other
	Class 180 - Pears	



Division XXVIII - CANNED FRUITS, JELLIES, JAMS, ETC. - OPEN

An exhibit of	Class 183 - Jam
2 identical jars.	Class 184 - Jelly
	Class 185 - Conserve or butter
	Class 186 - Other



Division XXIX - PICKLES & RELISHES

An exhibit of 2 quarts or pints of:

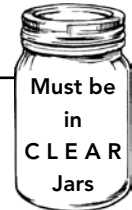
- | | |
|--------------------------------------|--------------------------------|
| Class 187 - Dill pickles | Class 191 - Pickled vegetables |
| Class 188 - Bread and butter pickles | Class 192 - Spaghetti sauce |
| Class 189 - Sweet pickles | Class 193 - Other |
| Class 190 - Relishes (any kind) | Class 193a - Salsa |



Division XXX - CANNED MEATS

An exhibit of 2 quarts or pints of:

- | | |
|------------------|---------------------------------------|
| Class 194 - Beef | Class 196 - Fowl |
| Class 195 - Pork | Class 197 - Fish |
| | Class 198 - Other (such as wild game) |



Division XXXI - FLOWER ARRANGEMENTS

Section A - Under 12

- Class 199 - One color or kind
- Class 200 - Two colors
- Class 201 - Assorted colors
- Class 202 - Dried arrangements
- Class 203 - Assorted wild
- Class 204 - Artificial flowers

Section B - 12 to 18 years

- Class 205 - One color or kind
- Class 206 - Two colors
- Class 207 - Assorted colors
- Class 208 - Dried arrangements
- Class 209 - Assorted wild
- Class 210 - Artificial flowers

Section C - Open

- | | |
|-------------------------------|--------------------------------|
| Class 211 - One color or kind | Class 214 - Dried arrangements |
| Class 212 - Two colors | Class 215 - Assorted wild |
| Class 213 - Assorted colors | Class 216 - Artificial flowers |

DIVISION XXXII - POTTED PLANTS

- Class 217 - Foliage
- Class 218 - Flowering foliage

DIVISION XXXIII - VEGETABLE BASKETS - OPEN

Class 219

Exhibitors will exhibit in a basket the following appropriate arrangement of vegetables which will add to the attractiveness of the display. Exhibit to consist of **5 different varieties of vegetables** such as:

- | | | |
|-----------------------|---------------------------|-------------------------------|
| beets - 4 | green peppers - 2 | rutabaga - 1 |
| broccoli - 1 | kohlrabi - 3 | spinach - 6 |
| cabbage - 1 head | lettuce leaves - 6 leaves | squash (summer or winter) - 1 |
| carrots - 4 | lettuce - 1 head | swiss chard - 1 |
| cauliflower - 1 head | onions - 4 | tomatoes (green) - 2 |
| cucumbers - 4 | parsley - 1 bunch | tomatoes (ripe) - 2 |
| dill - 1 bunch | parsnips - 4 | turnip - 1 |
| eggplant - 1 | pumpkin - 1 | yellow wax beans - 12 pods |
| endive - 1 plant | radishes - 6 | |
| green beans - 12 pods | red peppers - 2 | |

DIVISION XXXIV - VEGETABLES - OPEN

Exhibitor to consist of at least 5 (five) of ONE kind of vegetable

- | | |
|-------------------------------------|--------------------------------------|
| Class 220 - Potatoes | Class 235 - Rutabaga (1) |
| Class 221 - Carrots | Class 236 - Cucumbers |
| Class 222 - Squash, summer (1) | Class 237 - Cauliflower (1) |
| Class 223 - Squash, winter (1) | Class 238 - String beans (10) yellow |
| Class 224 - Pumpkin (1) | Class 239 - String beans (10) green |
| Class 225 - Beets | Class 2400 - Hot green peppers |
| Class 226 - Sweet corn | Class 2401 - Hot red peppers |
| Class 227 - Eggplant (1) | Class 2402 - Hot yellow peppers |
| Class 228 - Gourds (1) or (5) small | Class 241 - Green peppers |
| Class 229 - Yellow tomatoes | Class 242 - Red peppers |
| Class 230 - Red tomatoes | Class 243 - Garlic |
| Class 231 - Green tomatoes | Class 244 - Okra |
| Class 232 - Cherry tomatoes | Class 245 - Lima Beans |
| Class 233 - Onions | Class 245a - Other |
| Class 234 - Cabbage (1) | |

DIVISION XXXV - BIG VEGETABLES - OPEN

Exhibitor will exhibit one large vegetable for display. Size will be the only consideration for the award.

- | | |
|----------------------------|--------------------------|
| Class 246 - Potato | Class 254 - Green tomato |
| Class 247 - Squash, summer | Class 255 - Cabbage |
| Class 248 - Carrot | Class 256 - Onion |
| Class 249 - Squash, winter | Class 257 - Rutabaga |
| Class 250 - Pumpkin | Class 258 - Cucumber |
| Class 251 - Beet | Class 259 - Green pepper |
| Class 252 - Sweet corn | Class 260 - Red pepper |
| Class 253 - Red tomato | Class 261 - Other |

DIVISION XXXVI - FREAK VEGETABLES - ANY VARIETY - OPEN

- Class 262

DIVISION XXXVII - FRUITS - OPEN

Exhibitor to consist of at least 5 (five) of ONE kind.

- | | |
|----------------------------|---------------------------|
| Class 263 - Apples | Class 267 - Unusual fruit |
| Class 264 - Pears | Class 268 - Peaches |
| Class 265 - Muskmelon (1) | Class 269 - Plums |
| Class 266 - Watermelon (1) | Class 270 - Other |

DIVISION XXXVIII - GRAINS - OPEN

Exhibitor to consist of one quart glass jug of:

- | | |
|--------------------------|--|
| Class 271 - Oats | Class 278 - Field Corn (6 ears need not be in jug) |
| Class 272 - Wheat, red | Class 279 - Popcorn (6 ears need not be in jug) |
| Class 273 - Wheat, white | Class 280 - Popcorn yellow (6 ears need not be in jug) |
| Class 274 - Beans, white | Class 281 - Clover seed |
| Class 275 - Beans, soy | Class 282 - Alfalfa |
| Class 276 - Beans, lima | Class 283 - Indian Corn (6 ears need not be in jug) |
| Class 277 - Beans, green | Class 233a - Other |

DIVISION XXXIX - TALLEST STALK - OPEN

Class 284 - Corn
Class 285 - Sorghum
Class 286 - Sunflower
Class 287 - Popcorn

Class 287a - Sweet Corn

DIVISION XXXX - LARGEST SUNFLOWER HEAD - OPEN

Class 288

DIVISION XXXXI - LARGEST EAR CORN - OPEN

Class 289

DIVISION XXXXII - LIVING PLANT - OPEN

Class 290

DIVISION XXXXIII - BALED PRODUCT - OPEN

Class 291



